

# BRICK BY BRICK



## VENUE, PARKING, PRODUCTION, HOSPITALITY, AND GENERAL INFORMATION PACKET

- PLEASE REVIEW PRIOR TO SHOW ADVANCES -



Brick By Brick (200-400 capacity), founded in 1995 located in Bay Park, CA just north of Downtown San Diego. We host live music performances/concerts [mostly Heavy Metal, Punk, Hard Rock, etc.], private events, public events, video shoots, etc. We have in-house sound and lights, production staff, security staff, and bar staff along with a **full** bar. We are a 21+ venue/club.

Within this sheet you'll find the majority of the information needed for show advancement at Brick By Brick. Please reach out to BxB Production to advance the specifics 30 days out from your show. See contact details below.

#### **Table of Contents:**

1. **Cover**
2. **Intro and Contact List**
3. **Photos [interior & exterior], Venue Layout**
4. **Parking Instructions—Buses, Bandwagons, RV's**
5. **Parking Instructions—Maps**
6. **Parking Instructions—Vans, Cars**
7. **Load In/Load Out, Dressing Room, Wifi, Backline, Merchandise, Photo/Video, Special FX/Banners/Backdrops, Credentials, Guest List, Hospitality**
8. **House Tech Specs—Audio & Lighting, Stage Specs**
9. **Neighborhood Amenities/Points of Interest [food]**
10. **Neighborhood Amenities/Points of Interest [coffee, music stores, hotels, etc.]**

#### **Address / Links:**

##### **Brick By Brick**

1130 Buenos Ave, San Diego, CA 92110

Phone: 619-276-3990

Website: [www.brickbybrick.com](http://www.brickbybrick.com)

Facebook: [facebook.com/BrickByBrickSD](https://facebook.com/BrickByBrickSD)

Instagram: [instagram.com/BrickByBrickSD](https://instagram.com/BrickByBrickSD)

Twitter: [twitter.com/BrickByBrickSD](https://twitter.com/BrickByBrickSD)

#### **Contacts:**

##### **Talent Buyer / Booking Office:**

Shannon—[booking@brickbybrick.com](mailto:booking@brickbybrick.com)

Office Phone: 619-276-3990

##### **Production/Venue Manager:**

Jordan—[production@brickbybrick.com](mailto:production@brickbybrick.com)

Office Phone: 619-276-3990

##### **Box Office:**

[boxoffice@brickbybrick.com](mailto:boxoffice@brickbybrick.com)

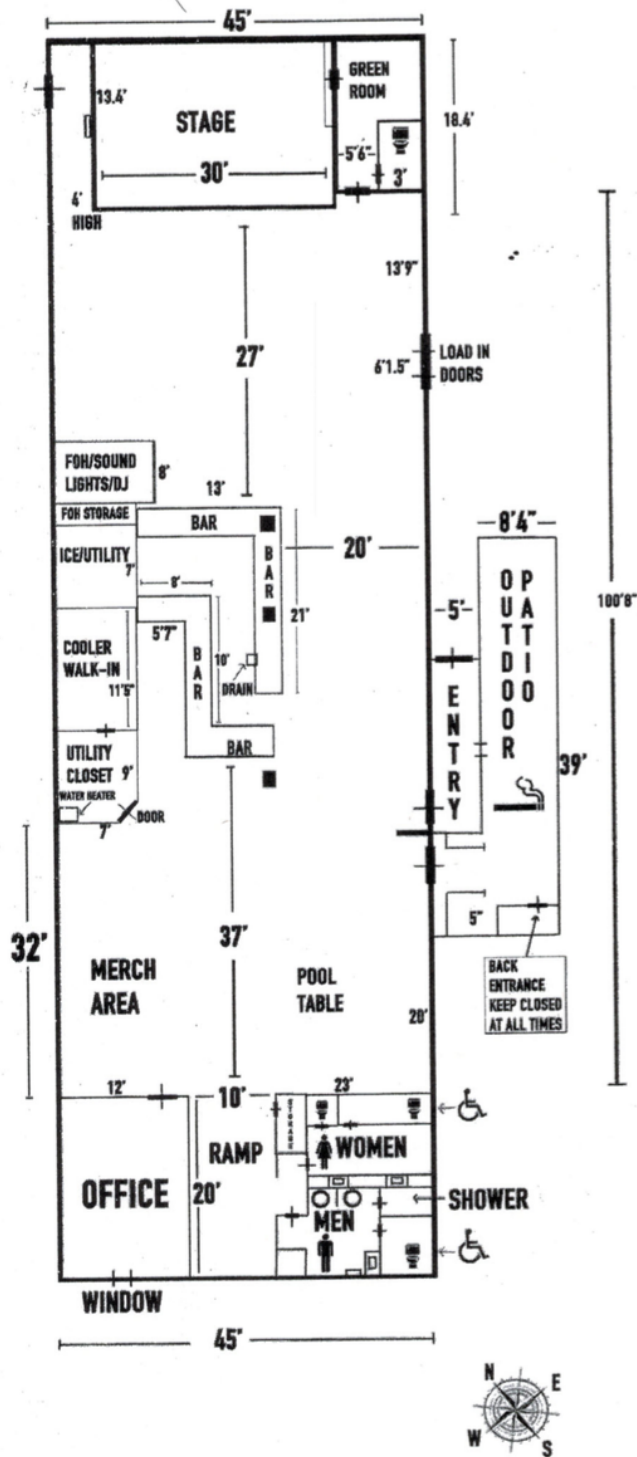
##### **Media:**

Shannon—[media@brickbybrick.com](mailto:media@brickbybrick.com)

Nick—[nick@brickbybrick.com](mailto:nick@brickbybrick.com)

##### **Bar:**

[bar@brickbybrick.com](mailto:bar@brickbybrick.com)



## **Parking Information: Buses / Bandwagons / RV's**

**\*\*\*Please follow these directions and advance no later than 3 weeks before show\*\*\***

**NOTE #5150:** Reserving Bus, Bandwagon, or RV parking the night prior to your show (w staff vehicles) is a grace the city has given us as a result of our historical compliance and diligence. Please respect the instructions and surrounding areas so we don't lose our ability to accommodate larger touring vehicles. We do not want to be forced to advance 'Dump & Run'. We thank YOU for your compliance / considerations in advance.

**NOTE #5150 II:** Do not accept the atypical directions from maps or GPS apps once you get ONE mile out from your exit. The directions below are not the fastest routes that are likely show up on your GPS app, BUT it is the necessary and will save you from painstaking U-turns or your guru [however, time consuming] reversing-maneuvers to get you facing WEST on Buenos Ave.

**NOTE #6505:** The advanced ARRIVAL TIME is STRICT [zero tolerance]. It is absolutely crucial that you do not show up any earlier or later than your scheduled arrival time. If you happen to arrive early as a result of your excellent navigation or driving skills, map out and go to your nearest 'big box store' or 'retail mecca' with ample parking (i.e. Target, Home Depot, etc. off of Sports Arena Blvd). Post up there until 15 minutes before your scheduled arrival time.

**NOTE #6505 Plus:** Bus Call should be advanced. If there's another bus arrival planned at BXB for the next day / show, your Bus Call can not be later than 2am. If there's no bus planned at BXB for the next day / show, you can usually stay parked as late as 7am the next day.

### **Directions From I-8 [traveling west]:**

- Exit 2A to merge onto I-5 North toward Los Angeles. 0.7 mi
- Exit 21 for Sea World Dr / Tecolote Rd. 0.2 mi
- Turn right onto Tecalote Rd. 0.2 mi
- Turn right at the 1st cross street onto Morena Blvd. 0.3 mi
- Turn right onto Buenos Ave

Arrive at 1130 Buenos Ave., San Diego, CA 92110

### **From I-5 [traveling south]:**

- Head south on I-5 toward Downtown San Diego.
- Exit 21 for Sea World Dr / Tecolote Rd. 0.2 mi
- Turn left onto Sea World Dr. / Telolote Rd. 0.2 mi
- Turn right at the 2nd cross street onto Morena Blvd. 0.4 mi
- Turn right onto Buenos Ave

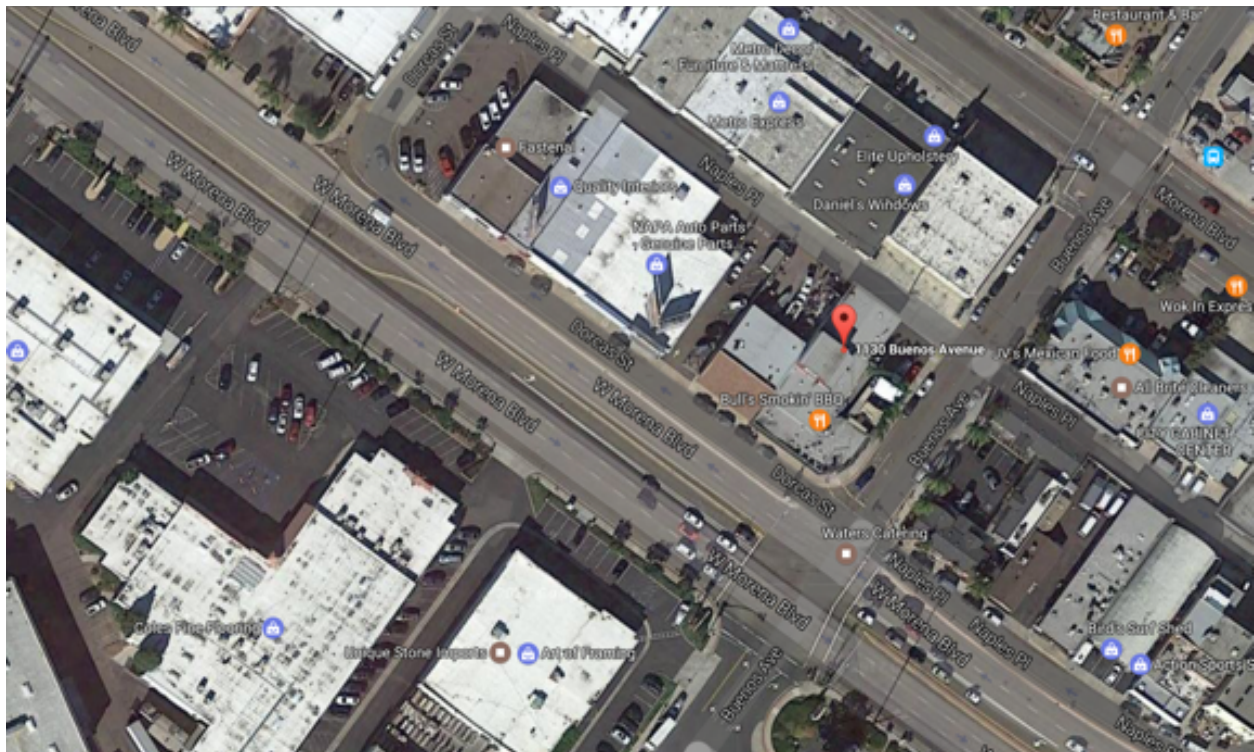
Arrive at 1130 Buenos Ave., San Diego, CA 92110

**\*Disclaimer: If your bus, bandwagon, or RV does not have a shore power hook up and ext cable:**

1. You will not be able to run your generator from 10:00AM—11:00PM due to the proximity of our neighboring restaurants' patio.
2. You can opt for a dump and run; either way the directions and notes still apply.



1130 Buenos Ave San Diego, CA 92110



Shore Power is located in between the two palms on the right-hand side. Please lay a mat or rug down over your shore power cable so it doesn't become a hazard to pedestrians.



## **Parking Information: Vans, Cars, and Trucks, etc.**

**\*\*\*These instructions are with or without a trailer. We thank you for your compliance and consideration in advance.\*\*\***

### **BXB Parking Lot:**

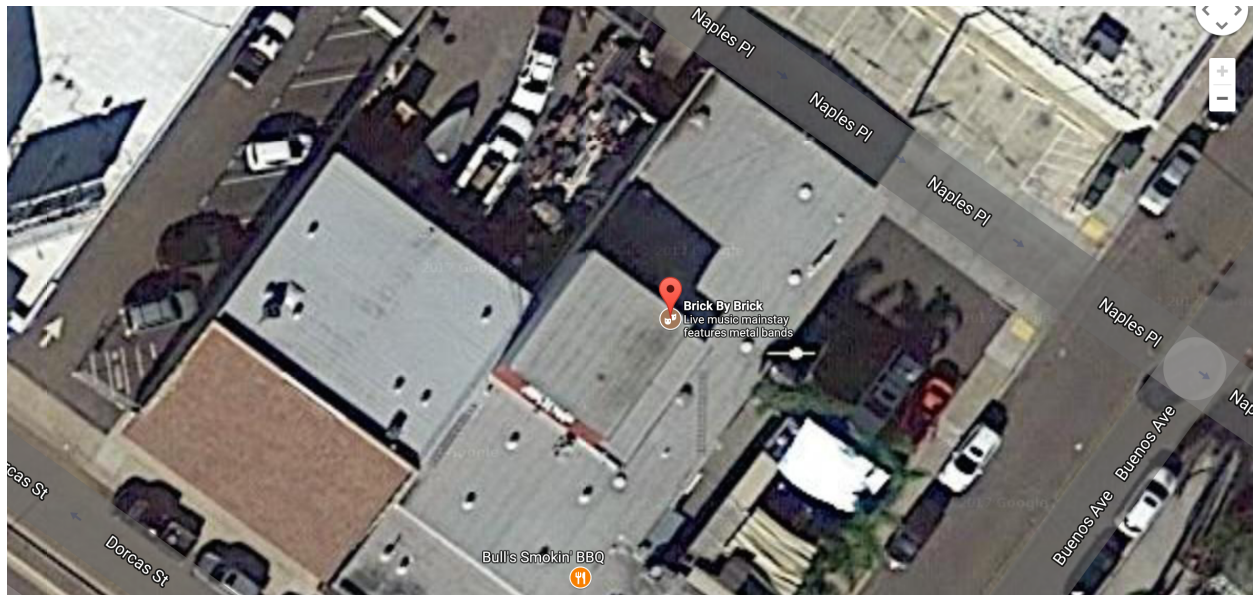
- › 2-3 parking stalls that can accommodate a van with or without a trailer per stall
- › Parking stall assignment will be advanced with you along with the day sheet / schedule
- › Pull your van and trailer straight in the assigned stall. **DO NOT BACK IN.**
- › 1st Stall [marked with a yellow parking block] closest to the double doors [load in doors], is designated for loading and unloading **only**. You may not park there for longer than 15 mins and must move your vehicle to our surrounding street parking that is free and NOT timed or restricted after 6:00PM daily.

We do not suggest, encourage, or approve artists or patrons to park in any of our neighboring business's private parking lots. You will likely be towed at your expense.

**Do not**, under any circumstances, block the alley way. You will get harassed by commercial truck drivers in transit.

Do not loiter in our parking lot or any adjacent parking.

**BE RESPECTFUL OF OUR NEIGHBORING BUSINESSES.**



<b>FOH</b>	Behringer X32 Digital Console
<b>MAIN SPEAKERS MID-THROWS</b>	QSC KLA12 Line Arrays (4) - Powered JBL Cabaret 4691-B Mid-throws (2) - Amp: Carvin DCM 2000
<b>SUBS</b>	Yorkville Elite 2 x 18's (4) - Amp [Outer Subs]: Crown XTI 6000 - Amp [Center Subs]: Crown XTI 4002
<b>MONITORS</b>	Behringer X32 Digital Console (downstage) Carvin SCX1112 (4) Drum Sub, Carvin 2 x 18 LS1802 (1) Drum Wedge, Carvin TCS 115m Wedge (1) Power Amps, QSC RMX185OHD (9), QSC RMX1450 (1), QSC RMX2450 (1) Carvin DCM 2000 (4) Carvin DCM 600 (3) Behringer Super XPro Crossover (2)
<b>STAGE DIMENSIONS</b>	18' x 26' (depth x width)/Banner Truss 10' x 7'
<b>DRUM RISER (PORTABLE &amp; MOVABLE)</b>	6' x 8' x 7" (depth x width x height)
<b>LIGHTS</b>	Par cans (15) NSI MC 7008 (for Cans) LED (6) Wash Elation DMX Operator Board (for LEDs)
<b>MICS</b>	<u>Audix D-6 (1), D2 (2), D4 (3), I-5 (2), OM2 (1), I-OH (2)</u> Shure 57 (2) Shure 58 (1) Sennheiser 609 (1) Sennheiser e835 (2) Sennheiser e935 (1) Sennheiser e901 (2) Sterling ST31 (2) EV N6767A (2) Samson Q8 (6) R11 (1) Audio Technica Kick / Tom (1) Yamaha Dynamic (1) ATR 30 (1) Direct Input Boxes (5)



**Load In / Load Out:**

Gear and equipment, prior to door time, are loaded in through the south double doors adjacent to the BxB parking lot [stage left]. It's a 20' - 30' flat push to the stage from the parking lot or alley. Load out is through the stage right exit door directly after your set if your not headlining or closing the show. If you are headlining or closing the show, load out is through the same double doors that you loaded in from.

**Noise Curfew/Venue Curfew:**

We have a strict 4:00PM noise curfew with a 105db limit. Our venue curfew varies from event to event. Please advance and send inquiries about curfews to [production@brickbybrick.com](mailto:production@brickbybrick.com).

**Dressing Room Specs:**

Brick by Brick has 1 dressing room with a single restroom, located stage left with direct access to the stage. Brick by Brick has 1 shower available for use 4 hours before doors or 30 mins after the show ends until curfew (curfew for the dressing and venue will be advanced with production).

**Wifi Information:**

Network: TWCWIFI - Go to Guest Network - Pass: N0PE

**Backline:**

Brick by Brick has house backline for rent. If you require local backline please check with the Production Manager for availability and pricing well in advance.

**Merchandise:**

Merchandise is typically set up and sold in the back house-left area of the venue. We have 3 large merch racks, spot lighting, and 3 folding tables for artist/vendor use.

Merch rates/house percentages vary depending on promoter, contracts, etc. Please advance and refer to your contract or booking agent for specifics. We can provide contacts for local merch sellers if needed—please advance 30 days out.

**Photo/Video:**

The use of professional photo and video is prohibited unless approved and advanced with production. Media credentials must be submitted with guest list no less than one hour before doors.

**Special Effects/Banners/Back Drops:**

Use of special effects such as confetti, water-based paint, fake blood, glitter, etc. **must be ADVANCED with the production manager [NO DAY-OF EXCEPTIONS]**. These materials take time and labor to clean in preparation for the next show, and we need to be prepared. Cleanup fee for use of such items will range from \$250-\$500 depending on the severity and will be deducted from show settlement as an expense. **The use of pyro is strictly prohibited.**

Banners and back drops must have a fire-certificate to be hung anywhere in the venue [stage or merch area]. Please advance with [production@brickbybrick.com](mailto:production@brickbybrick.com).

**Credentials:**

Brick by Brick will honor touring credentials if the Production Manager is provided 24 hours notice and a printable version of the credential art at least one hour before scheduled load in-time. Otherwise, your touring party will be issued house wristbands.

**Guest List & Ticket Buys:**

Please have your guest list prepared no later than one hour prior to scheduled door time. Guest list may be submitted at the door, with the promoter, or sent via email [guestlist@brickbybrick.com](mailto:guestlist@brickbybrick.com). Ticket Buys can be advanced with [production@brickbybrick.com](mailto:production@brickbybrick.com) or [booking@brickbybrick.com](mailto:booking@brickbybrick.com).

**Hospitality:**

ANY & ALL hospitality requests can be directed to your advance contact. WE DO NOT GIVE OUT DRINK TICKETS.



## **Points of Interest / Neighborhood Amenities:**

### **Restaurants:**

#### ***Sardinas [Italian]—0.1 miles***

1129 Morena Blvd, San Diego, CA 92110

sardinasrestaurant.com

(619) 276-8393

Hours: 11AM–11PM

\*\*\*Italian Torpedo Sub [ask for an extra side of dressing]\*\*\*

#### ***JV's Mexican Food [Mexican]—0.1 miles***

1112 Morena Blvd, San Diego, CA 92110

jvsmexfood.com

(619) 276-0758

Hours: 9AM–2AM

\*\*\*The California Burrito\*\*\*

#### ***Bulls Smokin' BBQ [BBQ]—0.1 miles***

1127 West Morena Blvd, San Diego, CA 92110

bullssmokinbbq.com

(619) 276-2855

Hours: 11AM–10PM

\*\*\*Sliders, Beef Ribs, Pulled Pork Fries, Mac and Cheese are solid moves\*\*\*

#### ***Rose Donuts [Donut Shop/Breakfast]—0.4 miles***

5201 Linda Vista Rd, San Diego, CA 92110

(619) 294-8856

Hours: 24/7

\*\*\*Try the Fiesta Breakfast Bagel combo [comes w/ your choice of donut and beverage]\*\*\*

#### ***J&T Thai [Thai]—0.4 miles***

5259 Linda Vista Rd, San Diego, CA 92110

(619) 294-7500

Hours: 11am - 12am

\*\*\*Everything is good\*\*\*

#### ***Native Foods [Vegan]—1.4 miles***

3369 Rosecrans St., San Diego, CA 92110

nativefoods.com

(619) 225-1155

Hours: 11AM-10PM

#### ***Kindred [Vegan]—5.6 miles***

1503 30th St., San Diego, CA 92102

barkindred.com

(619) 546-9653

Hours: 10AM-1AM

\*\*\*It's about a \$10 Uber ride from here. Worth it.\*\*\*

## **Points of Interest / Neighborhood Amenities:**

### **Coffee Shops:**

#### ***Starbucks—0.4 miles***

5175 Linda Vista Rd, San Diego, CA 92110  
 starbucks.com  
 (619) 497-0328  
 Hours: 4:30AM–10:30PM

#### ***Bird Rock Coffee Roasters—0.2 miles***

1270 Morena Blvd, San Diego, CA 92110  
 birdrockcoffee.com  
 (619) 272-0203  
 Hours: 6AM–4PM

#### ***Jitters Espresso & Juice—0.4 miles***

1413 Morena Blvd, San Diego, CA 92110  
 (619) 276-2040  
 Hours: 6:30AM–5PM

### **Music Stores:**

#### ***Guitar Center—11.3 miles***

8825 Murray Dr., La Mesa, CA 91942  
 guitarcenter.com  
 (619) 668-8400  
 Hours: 10AM–8PM

#### ***Sam Ash—8.7 miles***

4318 College Ave, San Diego, CA 92115  
 samashmusic.com  
 (619) 573-9669  
 Hours: 10AM–8PM

### **Superstores:**

#### ***Walmart Supercenter—8.8 miles***

3412 College Ave, San Diego, CA 92115  
 walmart.com  
 (619) 858-0071  
 Hours: 6AM–11PM

#### ***Target—1.3 miles***

3245 Sports Arena Blvd, San Diego, CA 92110  
 target.com  
 (619) 223-2491  
 Hours: 7AM–12AM

**Hotels: \*\*\*hotels.com [etc.] \*search\* HOTEL CIRCLE SAN DIEGO, CA [30+ hotels]\*\*\***